



Technical Information

S270

HMF Z001320

**The 270 Series**

	Rev.	No.
Technical Specifications	29-09-06	4 3 06010
Lifting capacity diagram, 270 K2	29-09-06	4 3 06021
Lifting capacity diagram, 270 K3	29-09-06	4 3 06022
Lifting capacity	29-09-06	4 3 06033
Dimension sketch, standard and extra valves	29-09-06	4 3 06040
Dimension sketch, NEM-RC and extra valves	29-09-06	4 3 06041
Dimension sketch, stabilizers	29-09-06	4 3 06042
Lifting height at column	29-09-06	4 3 06043
Positioning of C-point	31-01-07	4 3 06060
Centers of gravity	29-09-06	4 3 06075



Performance	Unit	270-K2	270-K3
Load moment	tm	2.5	2.4
Hydraulic reach	m	5.64	6.99
Hydraulic telescopic movement	mm	2.5	3.8
Out-reach with manual extensions	m		8.2
Lifting capacity, hydraulic	kg-m	790 – 3.1 550 – 4.3 410 – 5.6	775 – 3.2 540 – 4.4 405 – 5.7 325 – 7.0
Lifting capacity, manual extensions	kg-m		275 – 8.2
Slewing torque	kgm	390	390
Slewing angle	degrees	370°	370°
Max. heel at max load moment	degrees	4°	4°

Dimensions

Height above chassis, folded	mm	1527	1527
Width, folded	mm	A: 1700 B: 2000	A: 1700 B: 2000
Length, without extra valves	mm	538	564
Stabilizer spread, standard	mm	A: 3000 B: 3900	A: 3000 B: 3900

Working speeds

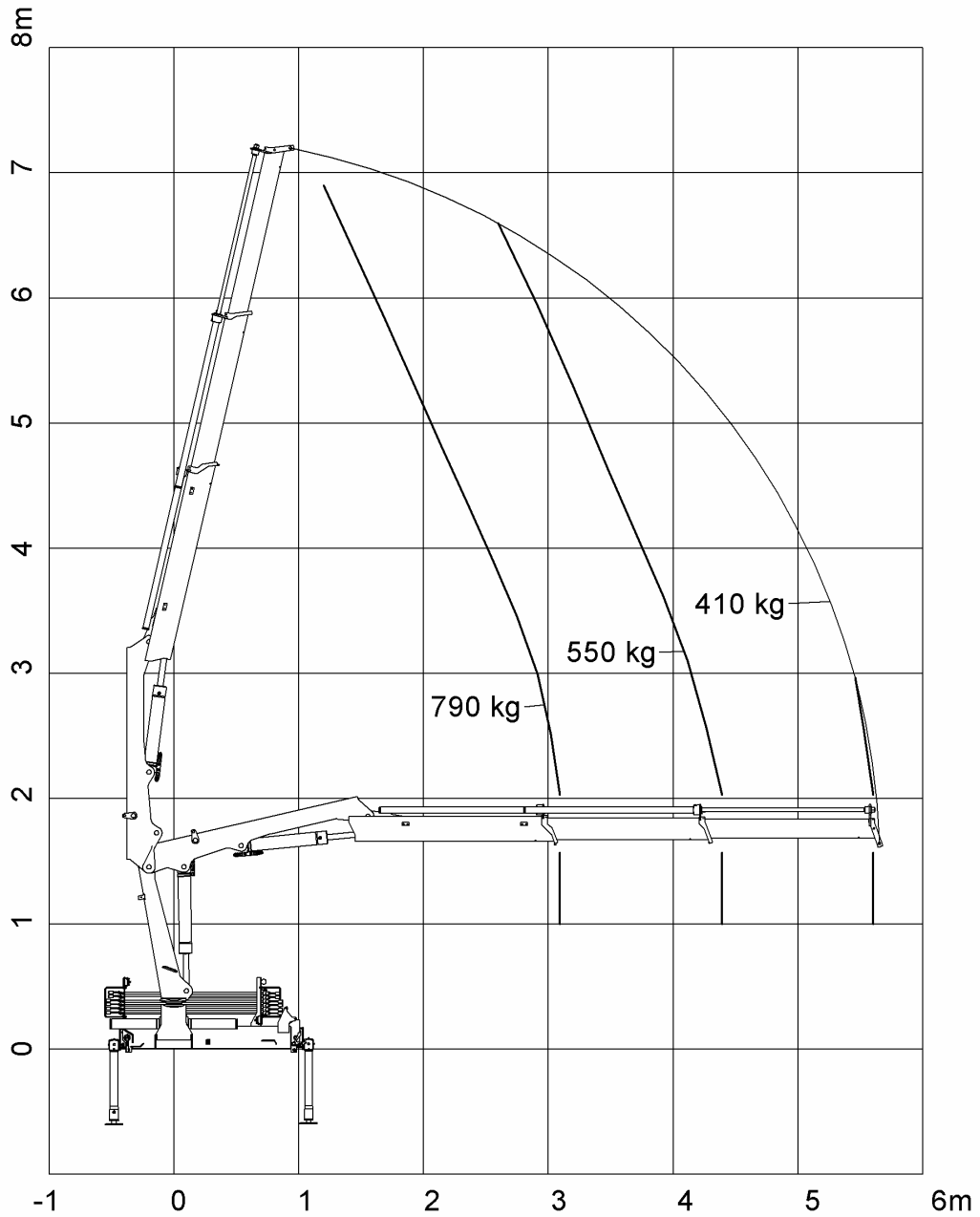
Slewing speed	degrees/s	20°	20°
Lifting speed at max. reach	m/s	0.8	0.8

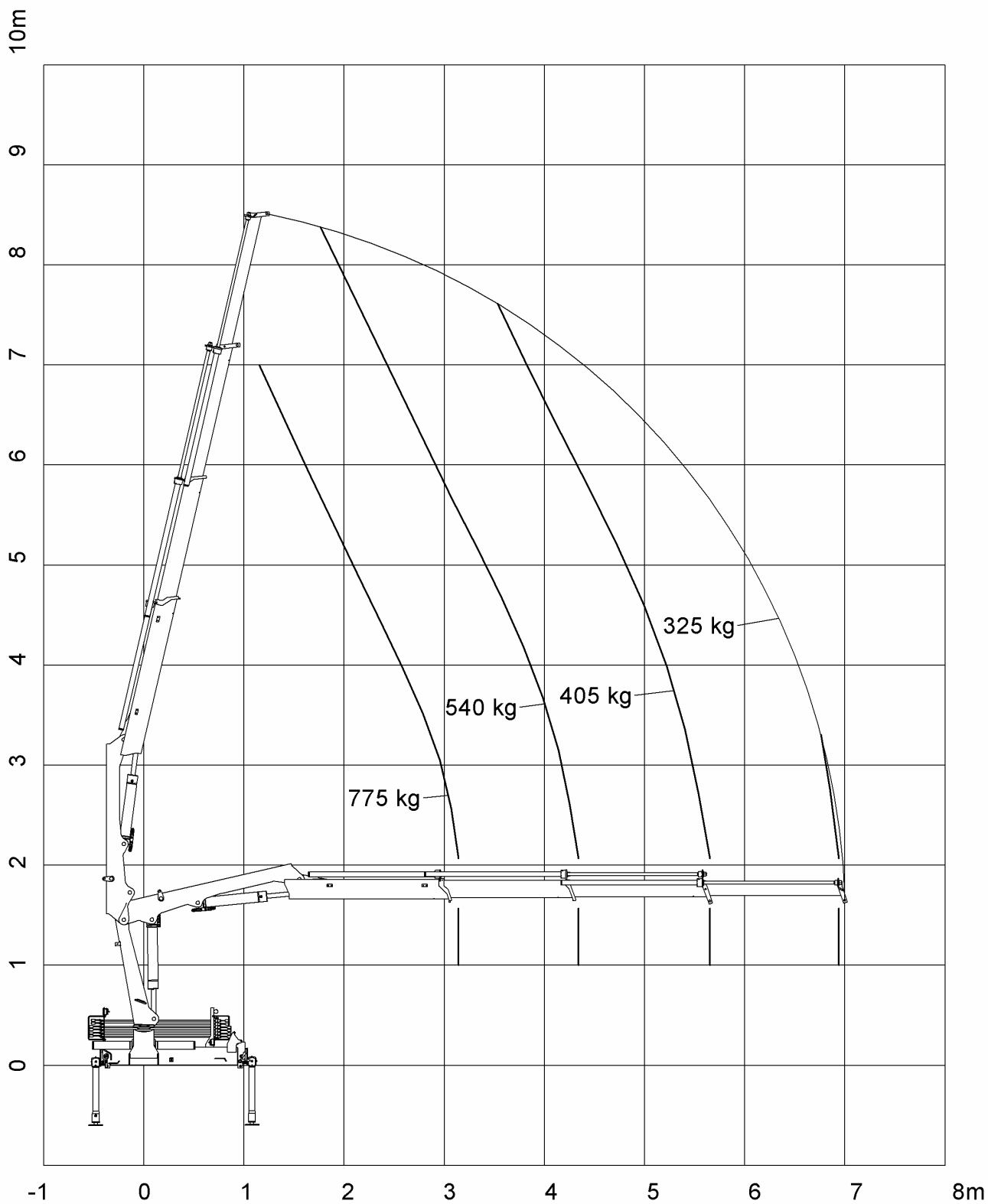
Weights

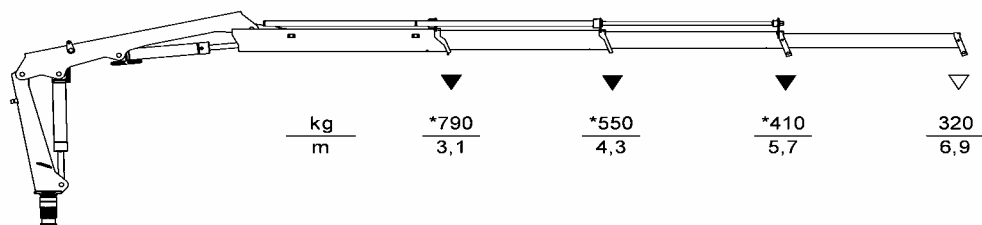
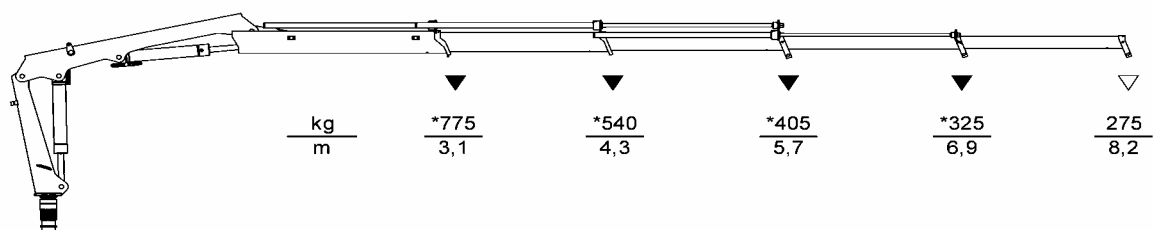
Standard loader, excl. stabilizers (A: 1700 mm)	kg	386	421
Standard loader, excl. stabilizers (B: 2000 mm)	kg	405	440
Stabilizers	kg	59	59
Mounting bolts	kg	20	20
Oil in base and cylinders	kg	15	16
Standard tank with oil	kg	21	21

Power consumption / oil capacity

Working pressure	MPa	19.0	19.0
Pump Performance	l/min	12	10
Power consumption	KW	4	3,5
Oil capacity in base	l	7.5	7.5
Oil tank capacity (separate tank)	l	15	15





270 K2270 K3

▽ Manual extension

* Without manual extensions

* The lifting capacity limits indicated must never be exceeded.



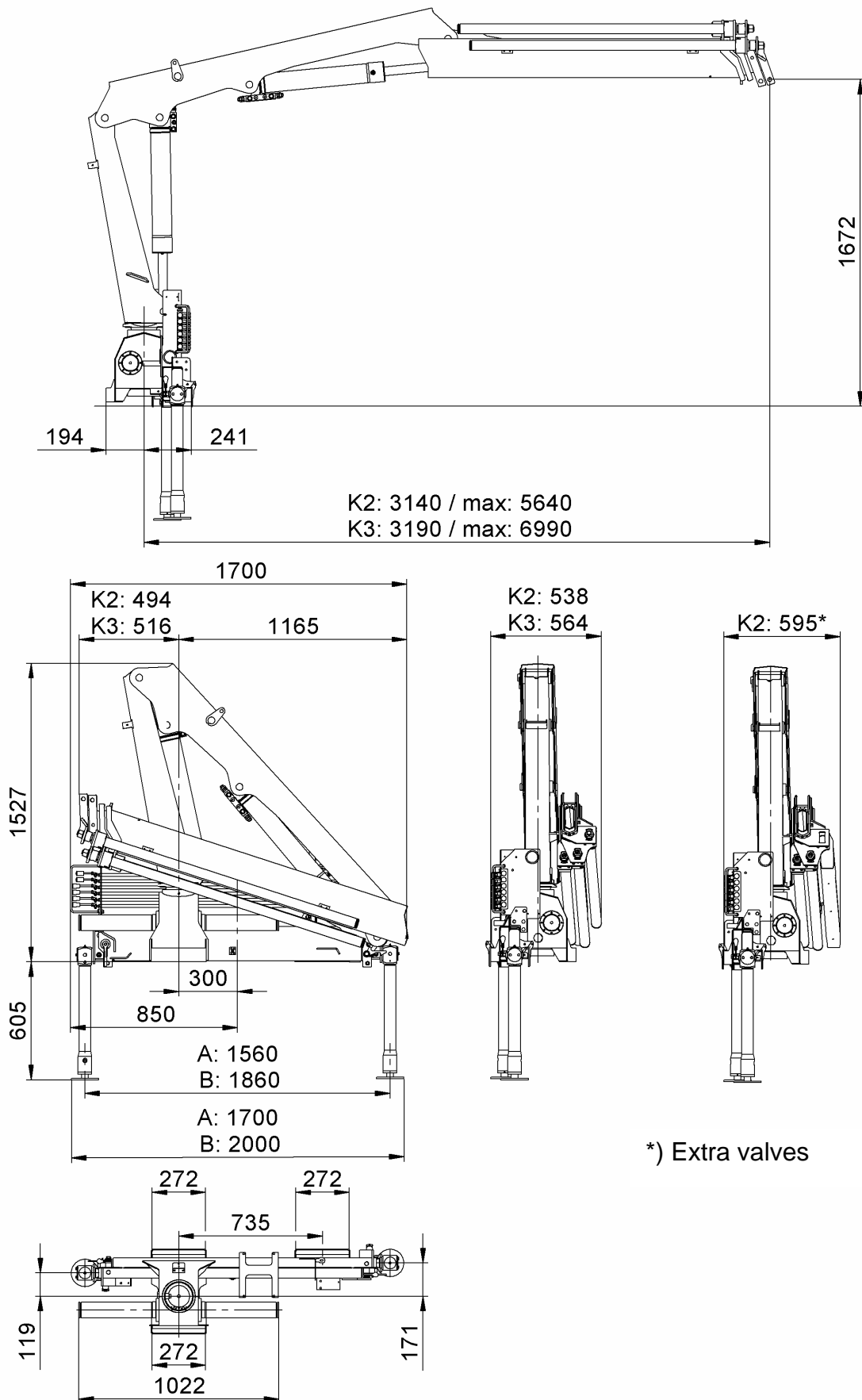
TECHNICAL INFORMATION, 270 SERIES

4 3 06040

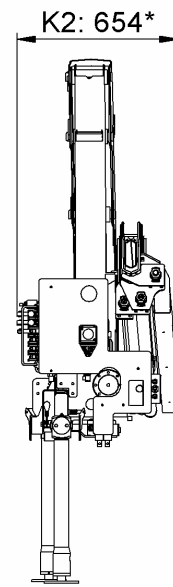
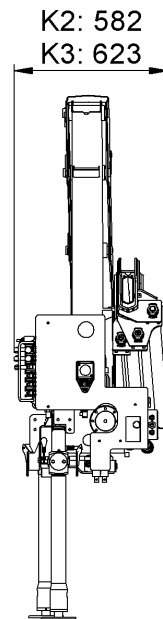
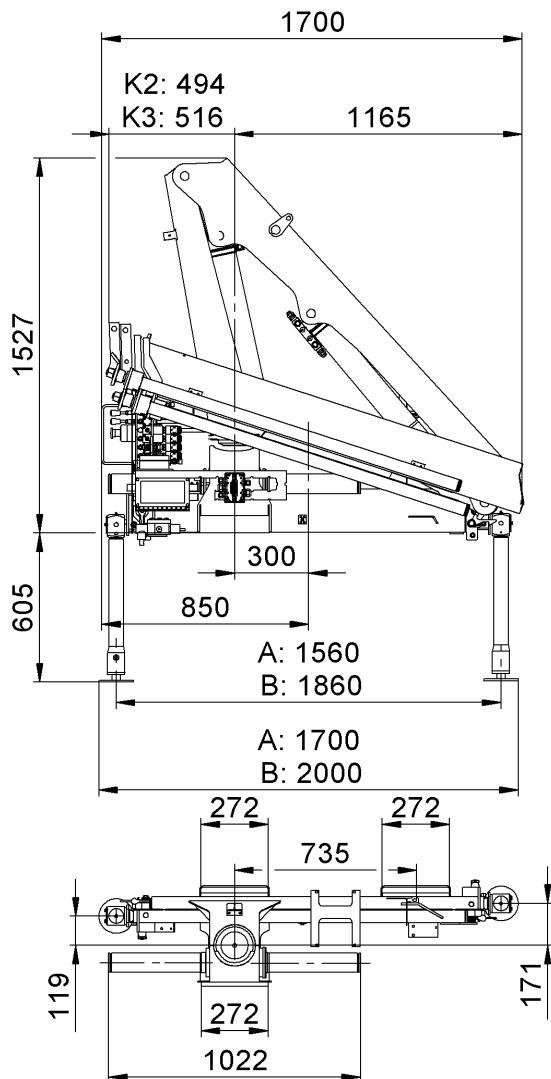
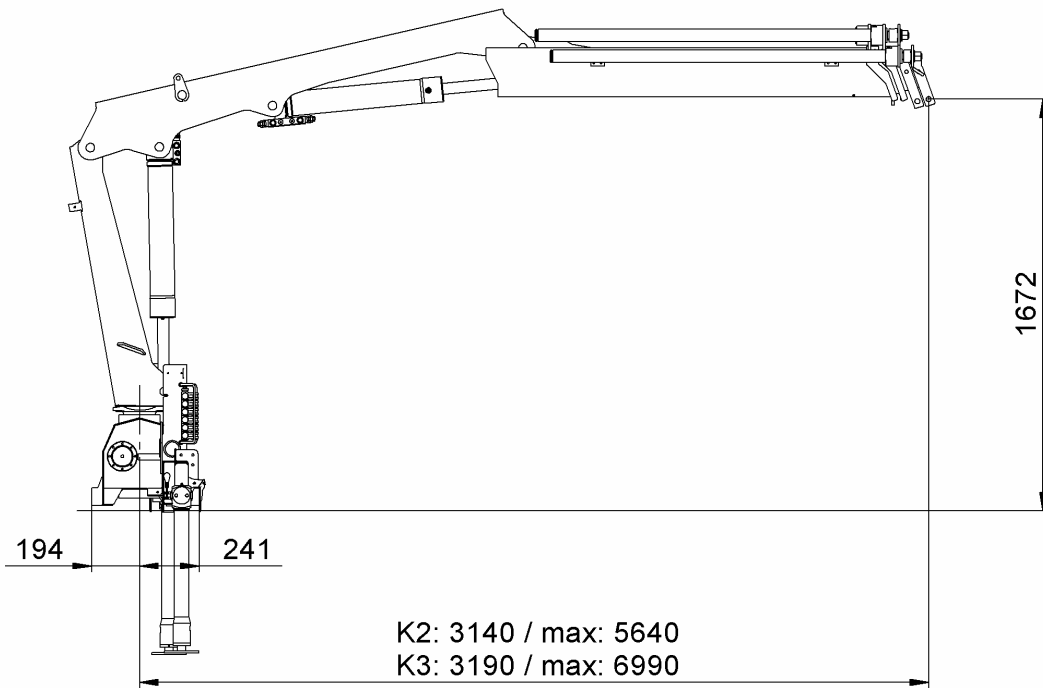
Dimension sketch, standard and extra valves

Page: 1 (1)

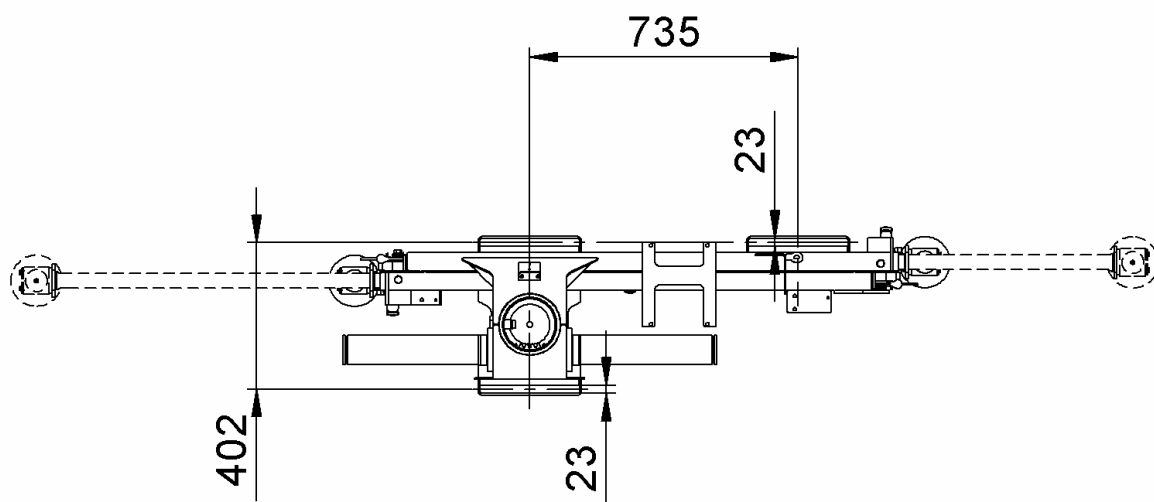
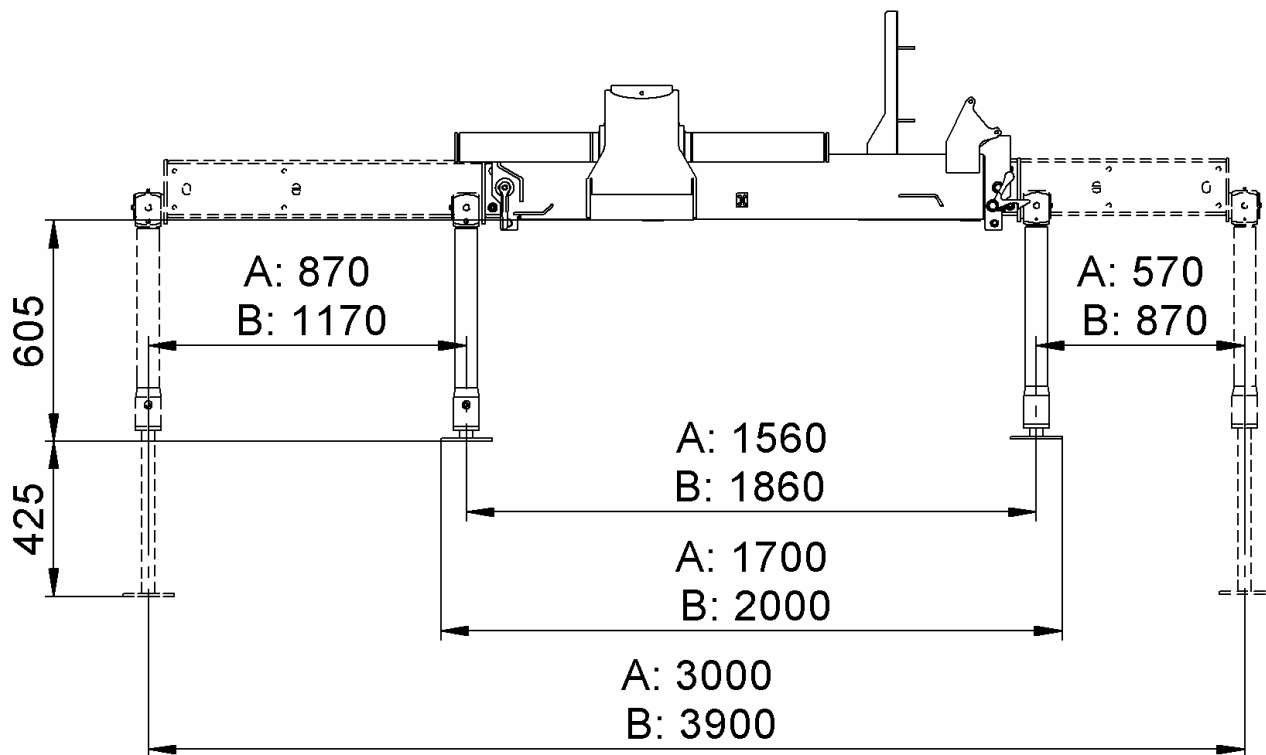
Date: 29.09.06

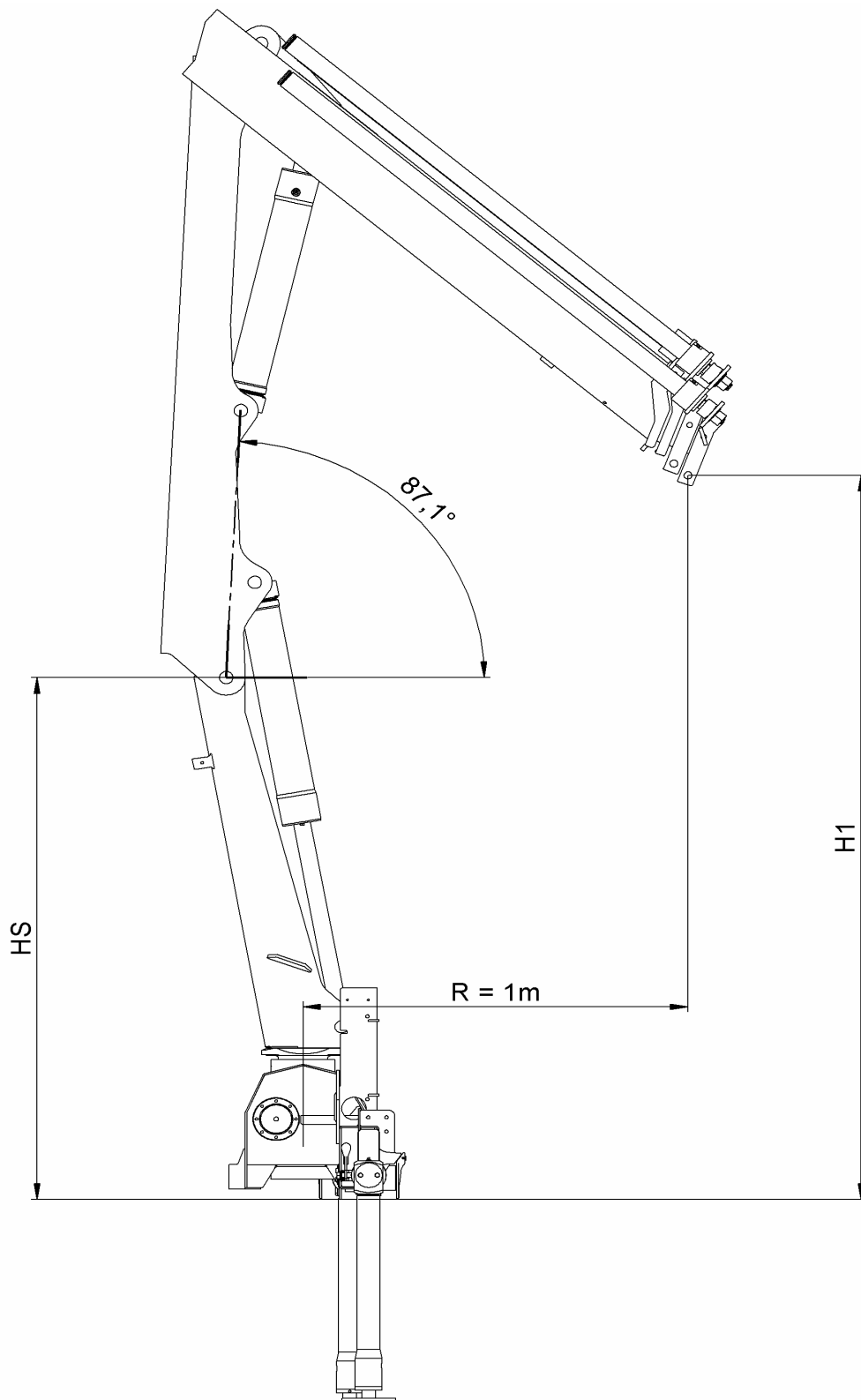


We reserve the right to introduce improvements and modifications



*) Extra valves

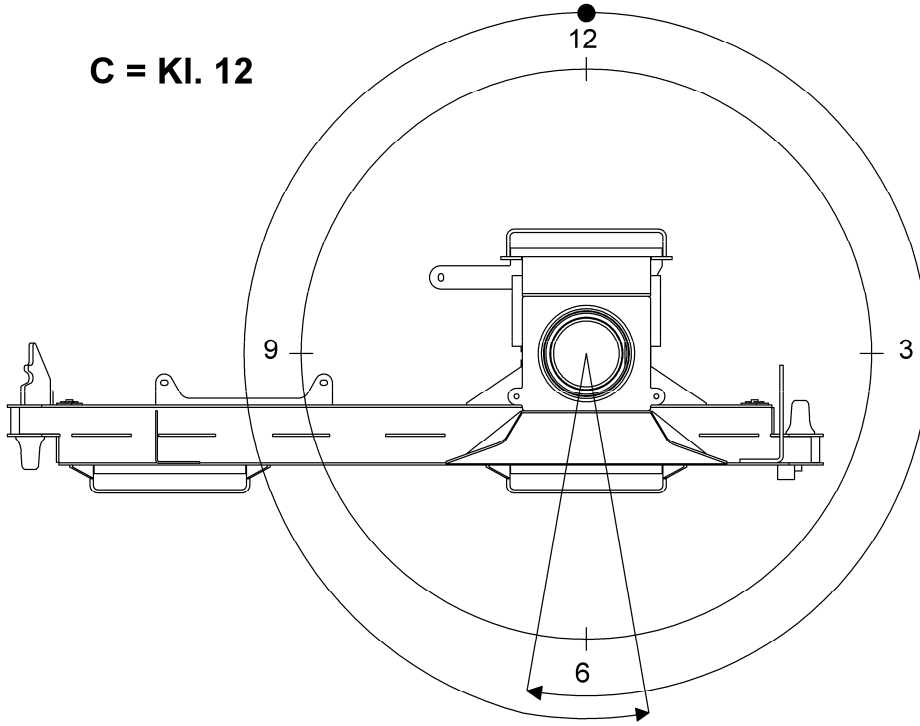




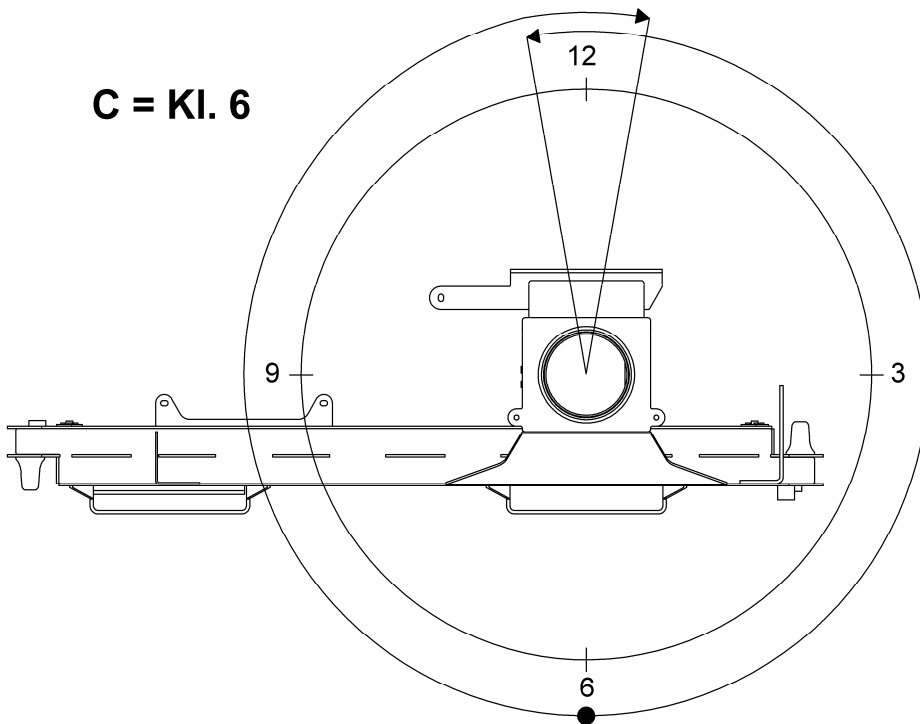
	HS	H1
S270K2	1,45m	2,08m
S270K3	1,45m	2,01m

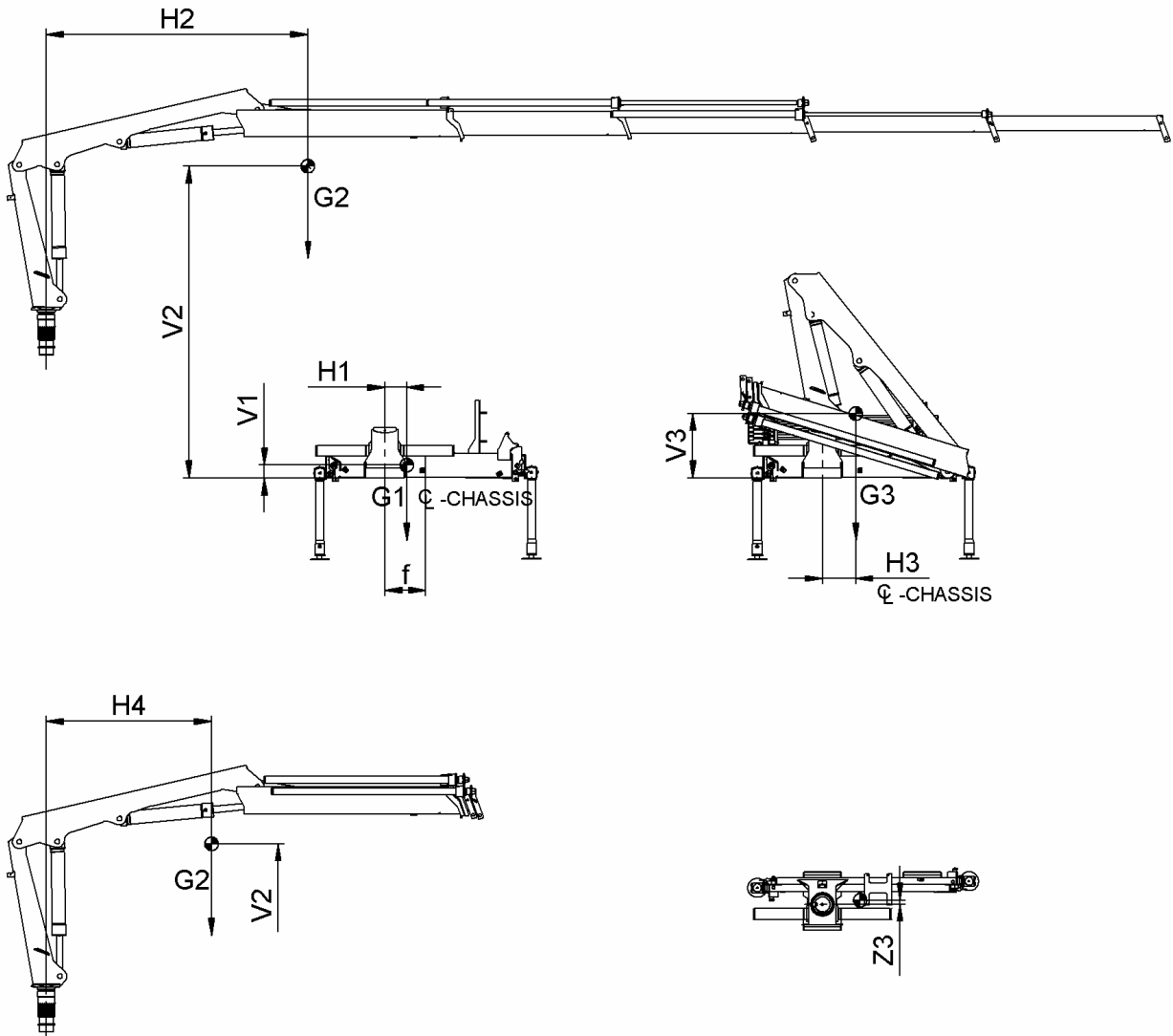


C = KI. 12



C = KI. 6





Model	V1	V2	V3	H1	H2	H3	H4	Z3	f	G1	G2	G3
270 K2	95	1330	465	160	1575	245	1175	20	300	181	264	445
270 K3	95	1355	475	160	1925	245	1215	30	300	181	299	480